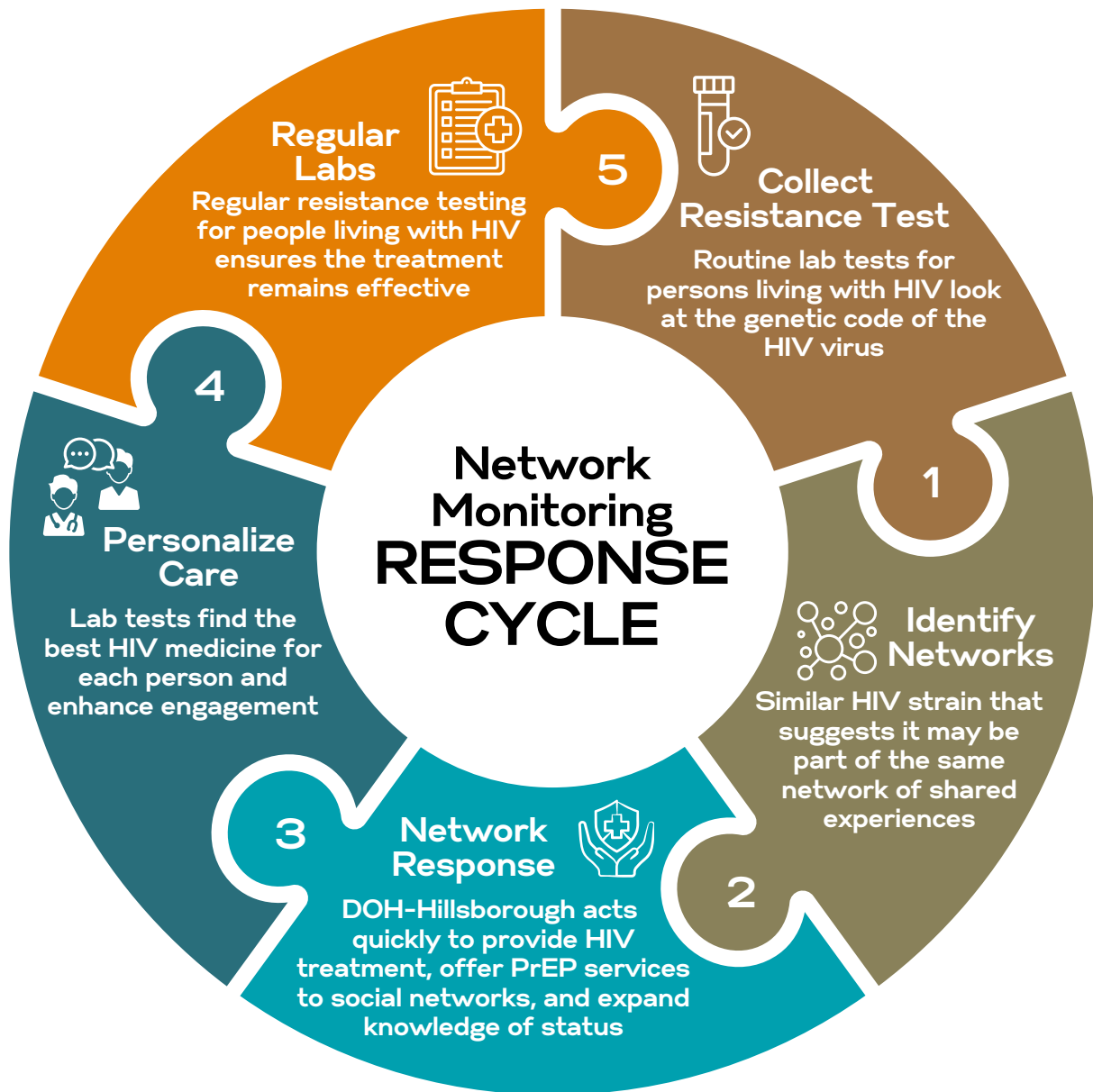


# HIV Network Monitoring and Care

The Florida Department of Health in Hillsborough County (DOH-Hillsborough) uses the HIV Network Monitoring and Care (NMC) to respond to increases of transmission. NMC is used to identify individuals who are unaware of their HIV status or those not fully engaged in care, allowing DOH-Hillsborough to connect them with treatment and support. NMC helps prioritize resources for communities to make the greatest impact.



## Key Terms to Know

**Drug Resistance Testing** – Test to check if HIV has become resistant to antiretroviral therapies (ART), ensuring the most effective treatment.

**HIV Genetic Information** – Virus' unique genetic makeup, used to guide treatment and improve public health while maintaining privacy.

# How NMC Works

## Protecting Community Health from HIV

### Resistance Testing Helps Communities

DOH-Hillsborough policies reinforces HIV genotype testing as part of routine monitoring efforts.

**Why it matters:** HIV drug resistance testing helps health professionals deliver the most effective treatment plans tailored to an individual's needs.

**How it works:** A small sample of the virus is tested in a lab to see if any medications won't work as intended (drug resistance). This helps us choose the right ART treatment.

**Key benefit:** Helps optimize treatment, reduce treatment gaps, and improve long-term viral suppression outcomes.

### Community Privacy is our Priority

Only authorized DOH-Hillsborough staff can view this data, strictly for HIV prevention and response. DOH-Hillsborough only reports de-identified data on the program's success and impact. No individual information is shared.

Confidentiality laws protect health information for communities.

### Putting People First: Language Matters

Using people-centered language fosters value, trust, and engagement with public health services. Shifting from 'clusters' to networks of people helps:

- Improves community communication
- Emphasize support over surveillance - focusing on connecting people to care, not only for tracking the HIV virus
- Encourages participation to take control of prevention and care services

### Understanding NMC Impact

NMC is another toolset that helps DOH-Hillsborough respond to new HIV diagnoses and prevent further spread. It's important to understand how it works and what information it provides.

**Part of a larger strategy:** NMC is one part of a comprehensive approach to HIV prevention. DOH-Hillsborough uses many different tools and strategies to get the most complete picture possible of communities impacted.

**Finding connections:** NMC helps DOH-Hillsborough identify connections between people, even without seeing the entire network. Every connection found helps provide support and expand data for better outcomes.

**Focus on support:** The goal of NMC is to identify networks where HIV is spreading. DOH-Hillsborough works with community partners to expand access to testing, treatment, and prevention services.

**Understanding patterns:** Make evidence-based decisions to allocate resources and address gaps in care, such as lack of access to testing, treatment, or support services, and tailor efforts effectively.



**Join the response team to help DOH-Hillsborough prevent HIV**