

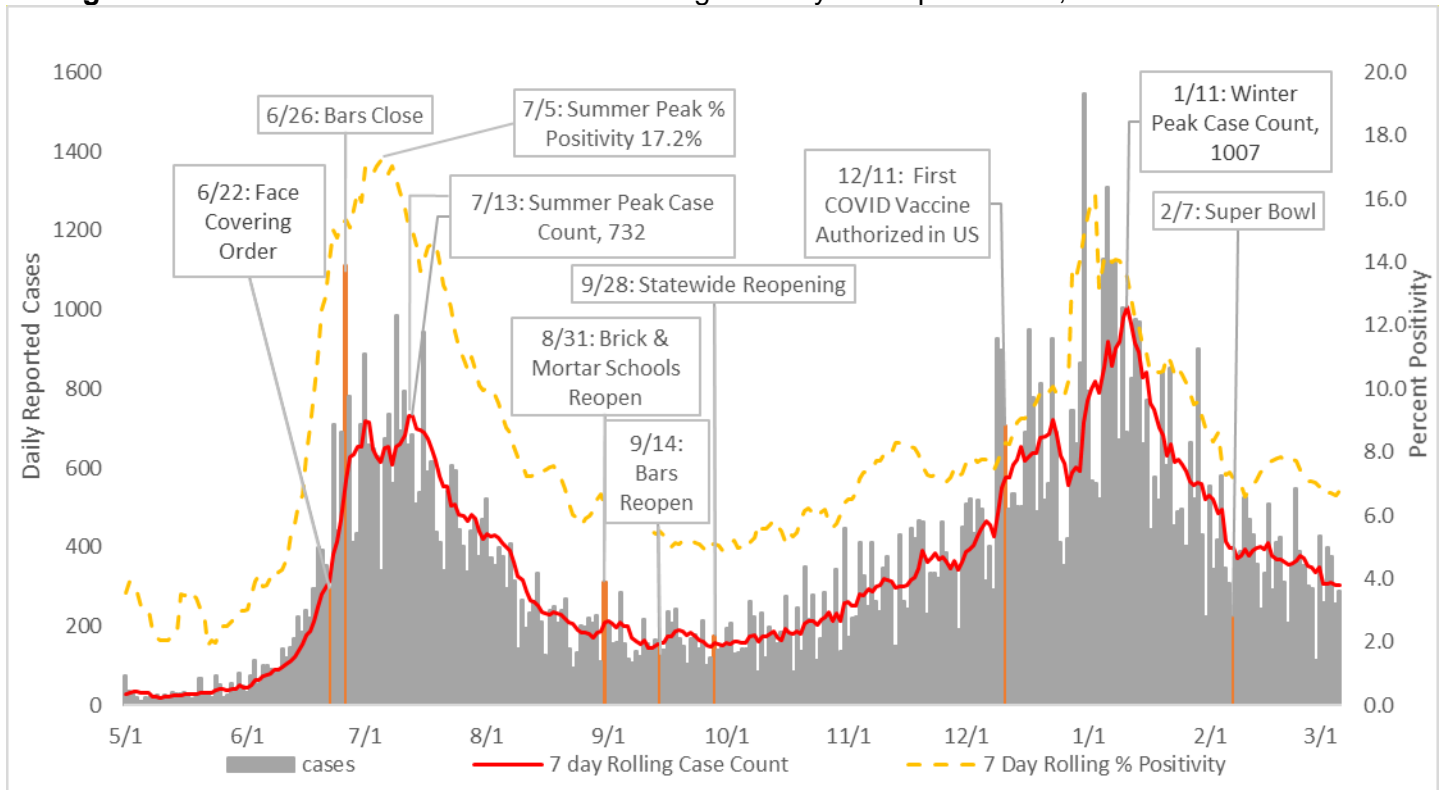
DOH-Hillsborough County COVID-19 Surveillance Report

Authors: Michael Wiese, MPH, CPH; Dr. Douglas Holt, MD; Danilo Polanco, MPH, CPH; Nikki Coble, MPH
Contributors: Dr. Edwin Michael (USF), Dr. Jason L. Salemi, PhD, MPH (USF)

SUMMARY: Over the past week (2/28– 3/6), 2,129 COVID cases were identified in Hillsborough County, a decrease of 13.5% from 2,462 during the previous week. The 7-day moving average of cases per day decreased slightly and is now 304. The 7-day moving average of percent positivity decreased from week 8 and is now at 6.8%. Case rates were highest in the 35-44 age group. Rates are stable in all race/ethnicities during week 8, and case rate continues to be highest in Hispanics. Case rates slightly decreased Statewide and all Tampa Bay Area counties. During the past week in Hillsborough County, testing rate decreased slightly. Pinellas County is experiencing higher testing per 100,000 residents compared to Pasco and Hillsborough. Antigen testing results are being reported on average within the same day and PCR testing turnaround time has stayed consistent at around 2 days. Hillsborough County hospitalizations for COVID increased and are now averaging 221 total COVID inpatients a day, up 5% from last week. At least one dose of COVID-19 vaccine has been administered to 173,231 Hillsborough County residents, representing 15% of the county’s vaccine eligible population (age 16 and older).

INFLUENZA/RESPIRATORY SURVEILLANCE: Influenza activity remains extremely low throughout Hillsborough County and the State. No outbreaks of Influenza or other respiratory pathogens have been reported this influenza season. Very few positive influenza labs have been received and no pediatric mortalities have been reported. Additional information and data about influenza surveillance is available at: <http://www.floridahealth.gov/diseases-and-conditions/influenza/>

Fig 1. Daily New COVID cases and percent positivity trends in Hillsborough County Residents. The 7-day moving average for percent positivity decreased slightly and is now 6.8%. The 7-day average number of new cases per day (304) decreased by 13.4% from week 8 and is well below the highest 7-day average of 1007 observed on 1/11/2021. Hillsborough County has reported 113,623 cases to date.



R_t AND INFECTION RATE ESTIMATES

Fig 2 (right). R_t median estimate for Hillsborough County since March 2020. R_t estimate is calculated based on “nowcasted” new case rates (incidence). Nowcasted refers to the fact that the incidence data has been corrected for the disease progression, reporting delays and observation error. Figure 2 includes the historical R_t median estimates (green), the past weeks nowcasted R_t median estimate based on partial data (orange) and the next 7 days forecasted R_t median estimate (purple). The colors, from darkest to lightest, indicate 20%, 50% and 90% credible intervals (CI), respectively. An R_t above 1.0 means the outbreak is growing – or viewed another way, one person is infecting more than one additional person – and R_t below 1.0 means that outbreak is shrinking. **The current estimate of R_t for Hillsborough County remained stable at 0.95 (90% CI = 0.79-1.10) where last week the estimate was 0.97 (90% CI = 0.80-1.10).**

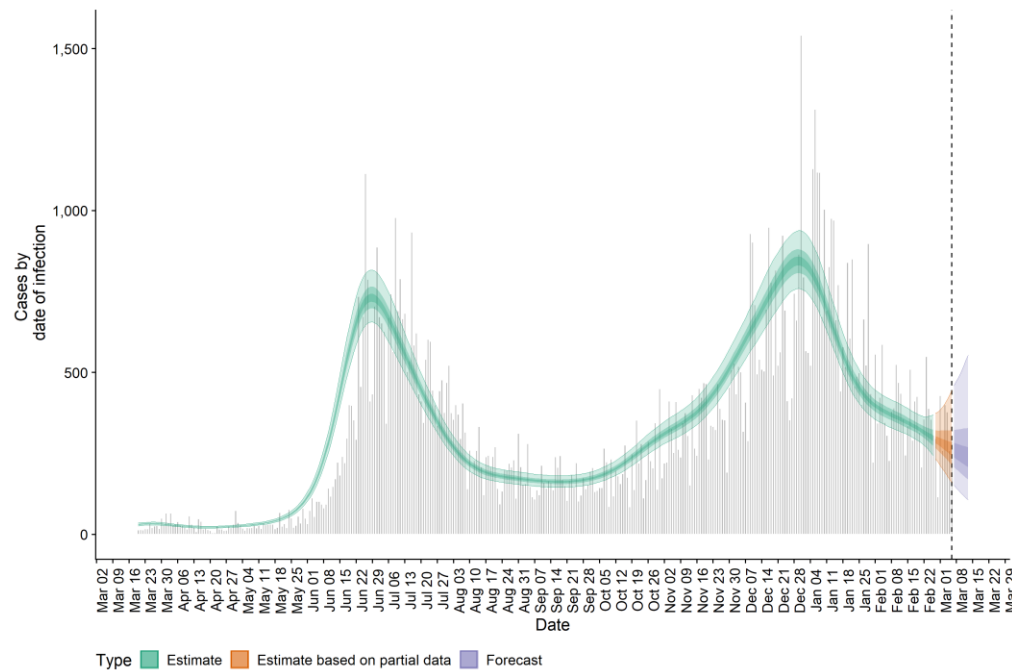
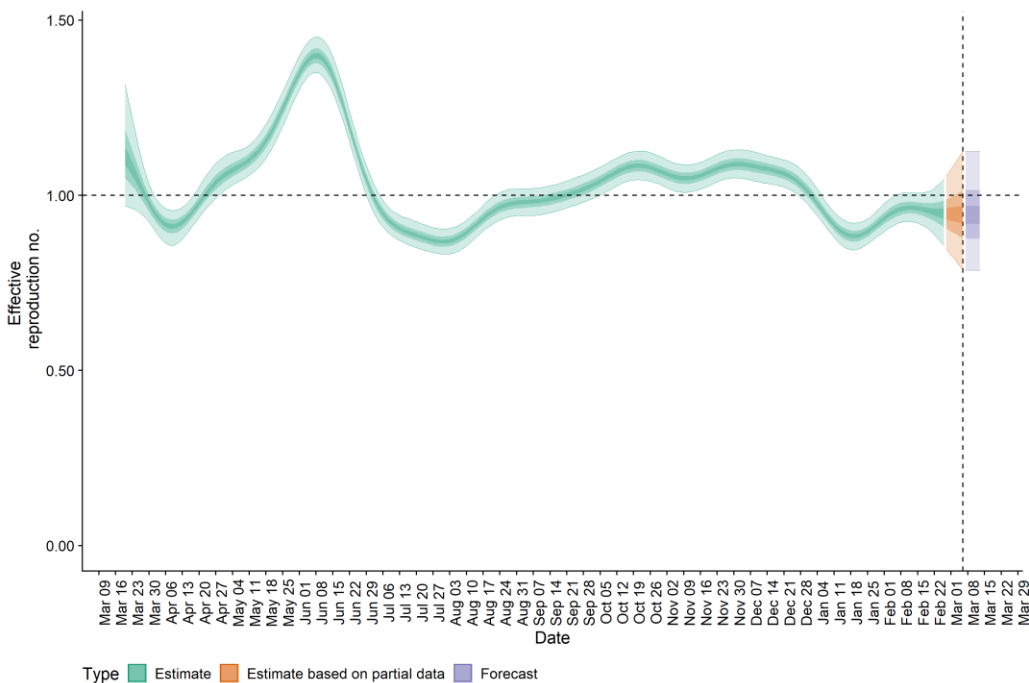
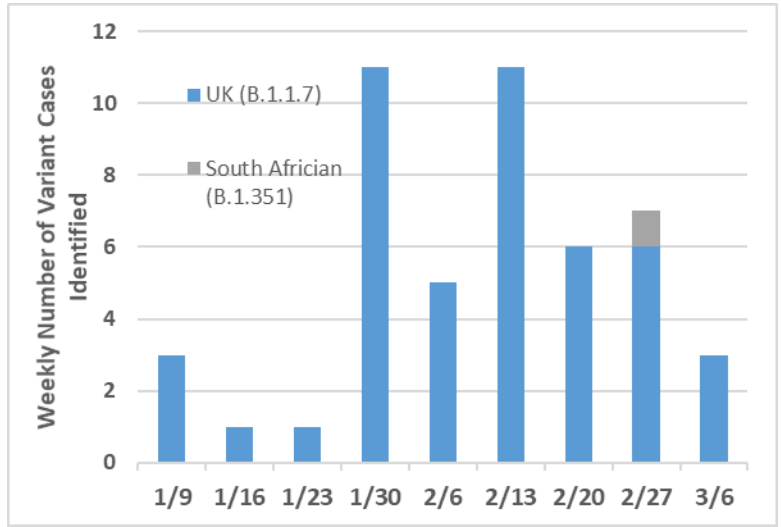


Fig 2B (left). Hillsborough County Daily cases since March 2020. Case estimate is calculated based on “nowcasted” new case rates (incidence). Nowcasted refers to the fact that the incidence data has been corrected for the disease progression, reporting delays and observation error. Figure 2B includes the historical case estimates (green), the past weeks nowcasted case estimate based on partial data (orange) and the next 7 days forecasted case estimate (purple). The colors, from darkest to lightest, indicate 20%, 50% and 90% credible intervals (CI),

respectively. **Based on this past week's case information the median rate of growth of new infections are -0.015 (-0.061 - 0.034), meaning that new infections are slightly decreasing.**

VARIANT CASES

Fig 2C. Variant COVID-19 cases in Hillsborough County by week identified as variant. The Florida Department of Health (FDOH) three Bureau of Public Health Laboratories (BPHL) have been taking randomized samplings from their positive COVID-19 specimens and performing genetic sequencing. Additionally, a few hospital, university and private labs have worked with CDC and are also performing sequencing. Once sequencing is complete, BPHL notifies FDOH staff of any COVID-19 cases where variant strains were identified. **As of 3/6/2021, 48 variant cases have been identified in Hillsborough County, 47 being the UK variant (B.1.1.7) and 1 South African variant (B.1.351).** Fig 2C (right) shows the number of variant cases by week based on the date the case was identified as a variant.



CASES, CASE RATES AND GROUP SETTINGS

Fig 3. Comparison of COVID 7-day average case rate per 100,000 population for Pinellas, Pasco, and Hillsborough Counties and the State of Florida for the past 90 days. All Tampa Bay area counties **rates slightly decreased**. The **Florida case rate decreased** and is now **23.3 cases per 100,000**.

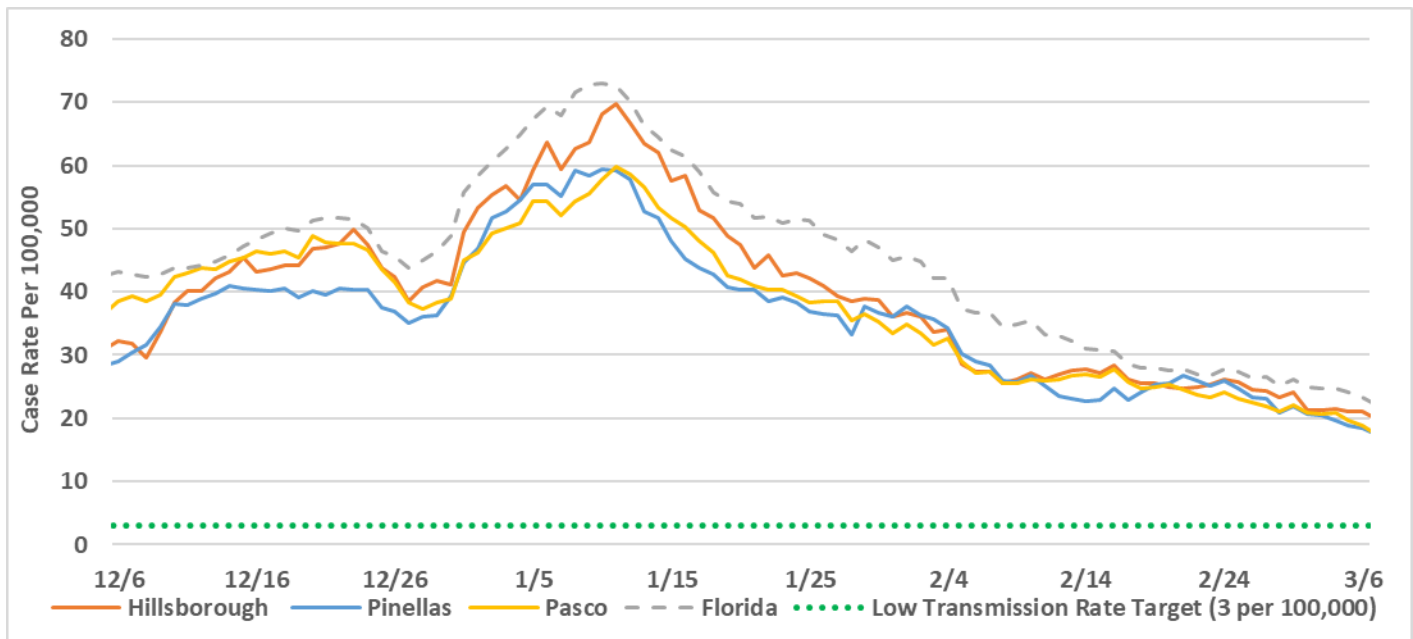


Fig 4. Comparison of COVID 7-day average case rate per 100,000 population by race and ethnicity for the past 90 days in Hillsborough County. Population data was acquired from FLHealth CHARTS. Cases with unknown race or ethnicity are excluded. Rates are remaining stable for all race and ethnicities, and **rates continue to remain highest among Hispanics.**

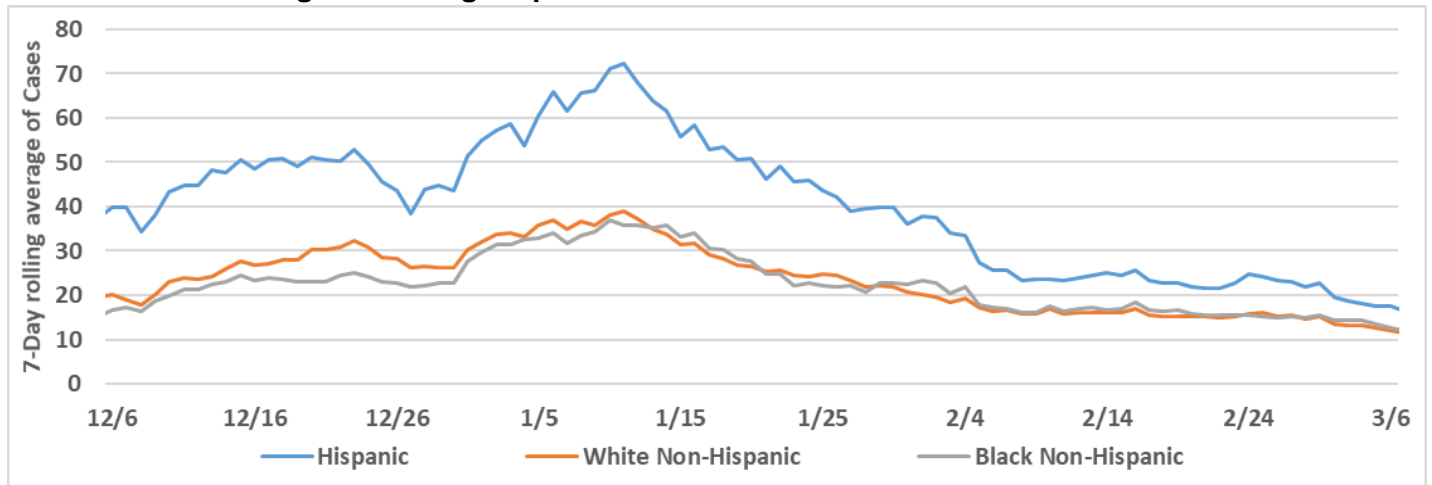


Fig 5. COVID 7-day average case rates per 100,000 population by age group for the past 90 days in Hillsborough County. **The 65+ age group ended the week with the lowest rate and case rate was highest in the 35-44 age group.**

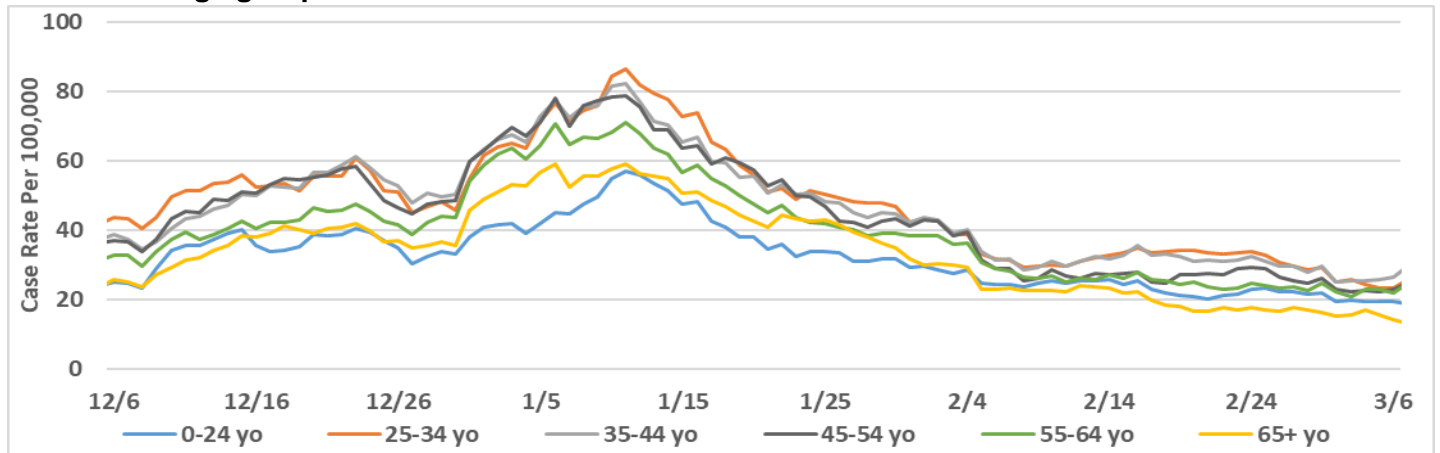


Fig 6. COVID pediatric and college-aged case rates per 100,000 population by age group, over the past 90 days in Hillsborough County. The 0-24 yo age group from Fig 5 (above), broken out into Preschool aged (0-4 yo), Elementary aged (5-10 yo), Middle/High School aged (11-17 yo) and College aged (18-24 yo). **Rates remain highest in college aged cases. All age groups remained stable during the past week besides college aged cases that slightly decreased.**

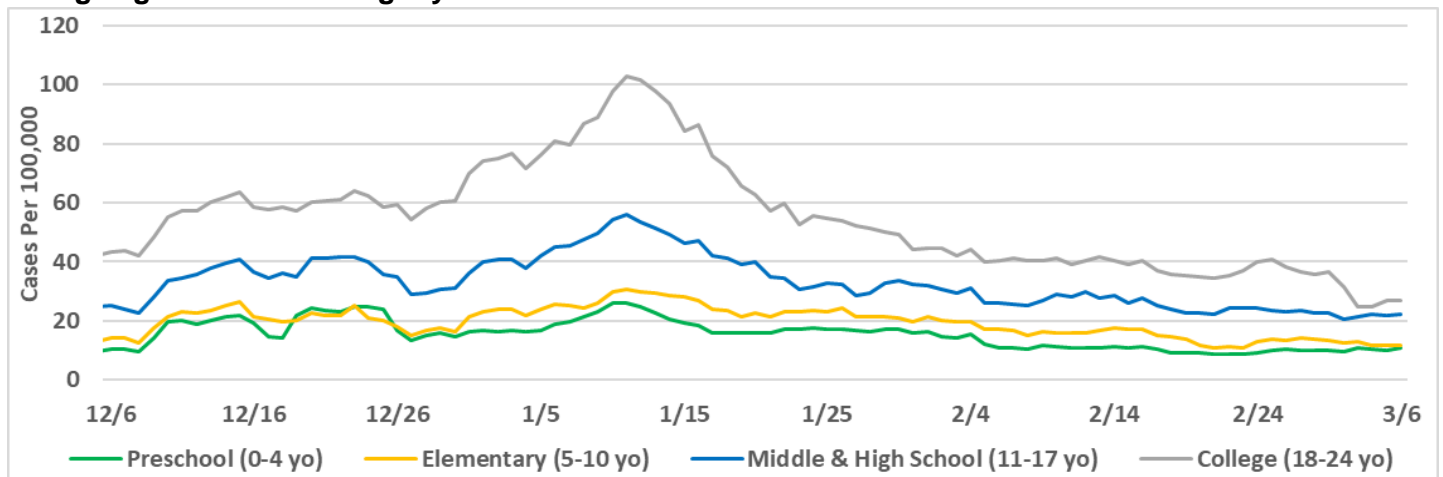


Fig 7. (right) Weekly reported COVID cases associated with **students and staff at K-12 schools** in Hillsborough County. COVID case must have been on campus during exposure period or infectious period to be counted. Public schools in Hillsborough County were closed for winter break for 2 weeks and the total number of cases decreased during those weeks. Public schools re-opened on January 4th, 2021 causing steady case rates since Week 1. Most cases are associated with family gatherings, travel and extra-curricular activities. Cases during week 9 **slightly decreased for students but remained stable for staff**. Cases from this week are still being investigated and numbers will change.

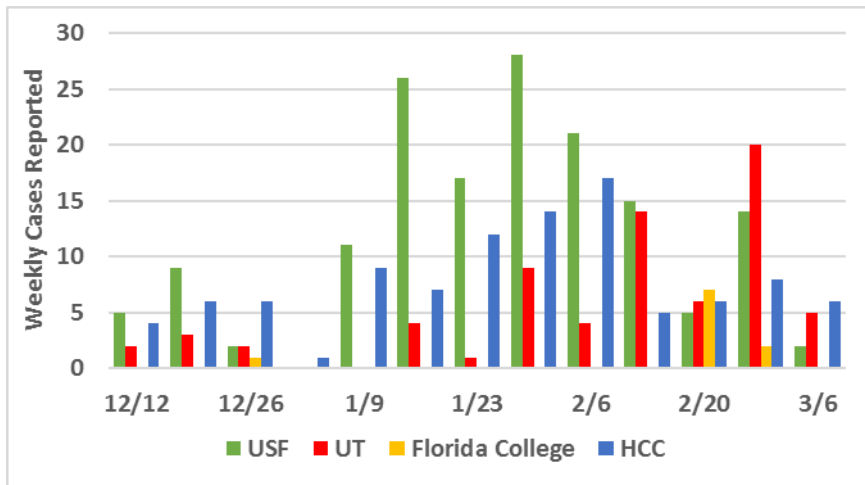
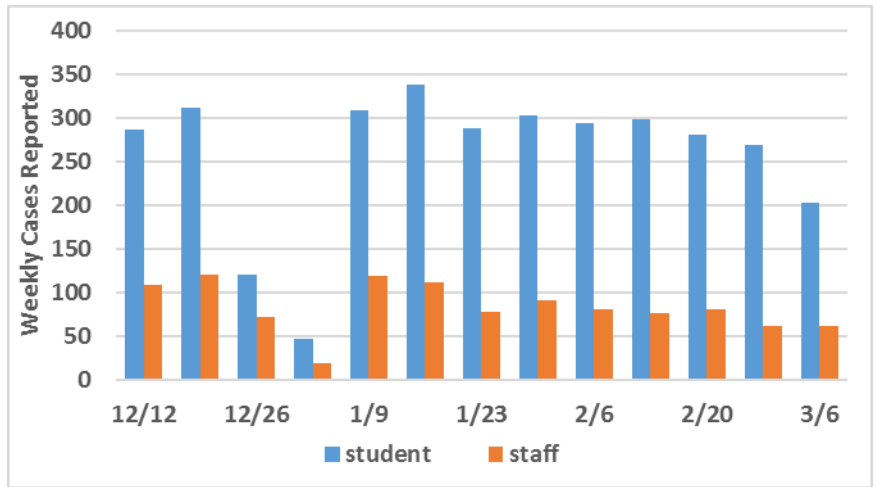


Fig 8. (left) Weekly reported COVID cases associated with **college students and staff** by reporting week. COVID case must have been on campus during exposure period or infectious period to be counted. Most college campuses were closed for winter break and have all now re-opened. **Low numbers of total cases were identified as compared to the fall semester. HCC reported the most cases during the past week.**

Fig 9. Daily COVID cases associated with **LTCF residents and staff** for the past 90 days in Hillsborough County. COVID case must have been on LTCF site during the exposure period or infectious period to be counted. The 7-day rolling average of **cases associated with LTCFs has remained stable**.

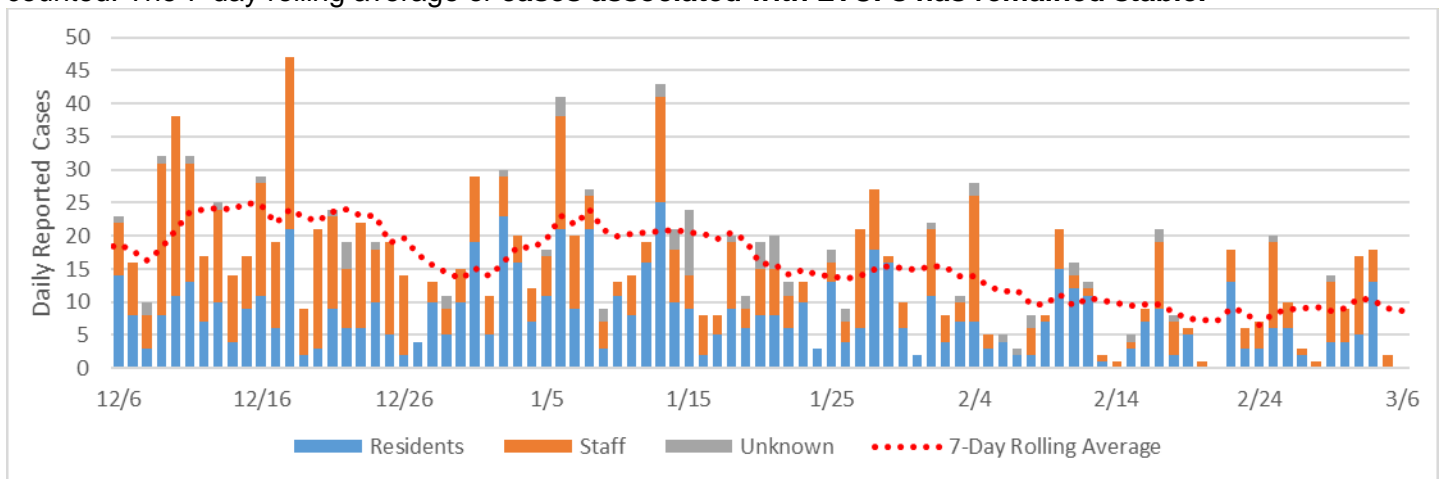
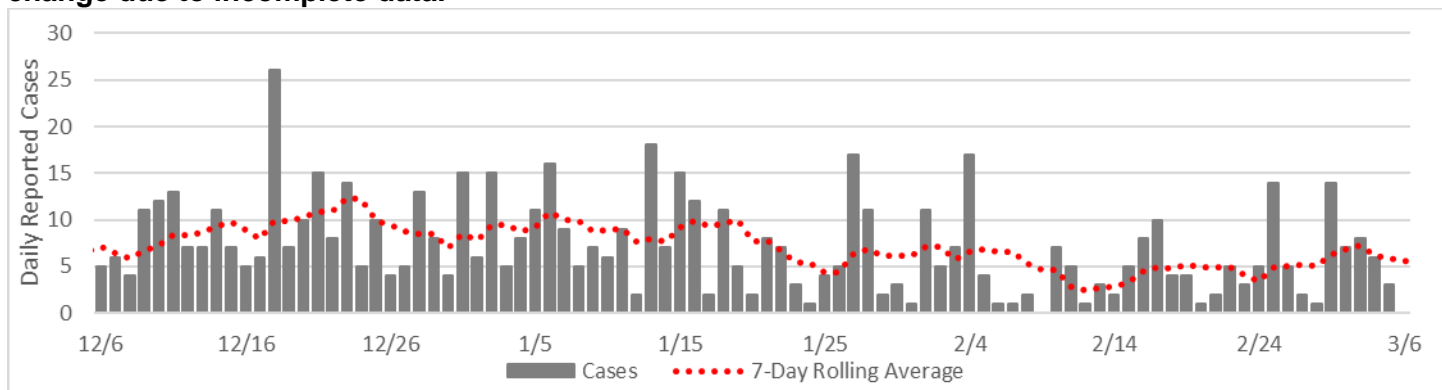


Fig. 10. COVID cases in **Health Care Workers (HCW)** for the past 90 days. To collect case occupation a case interview is required with the case, therefore the past week has missing/incomplete data, as case investigations are ongoing. **Reported cases in HCWs have remained stable this past week but could change due to incomplete data.**



TESTING RATE, TURN-AROUND TIME AND PERCENT POSITIVITY

Fig 11. Reported COVID testing volume and rate for Hillsborough County residents for the past 90 days. Tests are not de-duplicated by person or day; therefore, one person can have multiple tests counted across multiple days. Testing rate has been variable during the past 2 months but has been overall trending downward since mid-January.

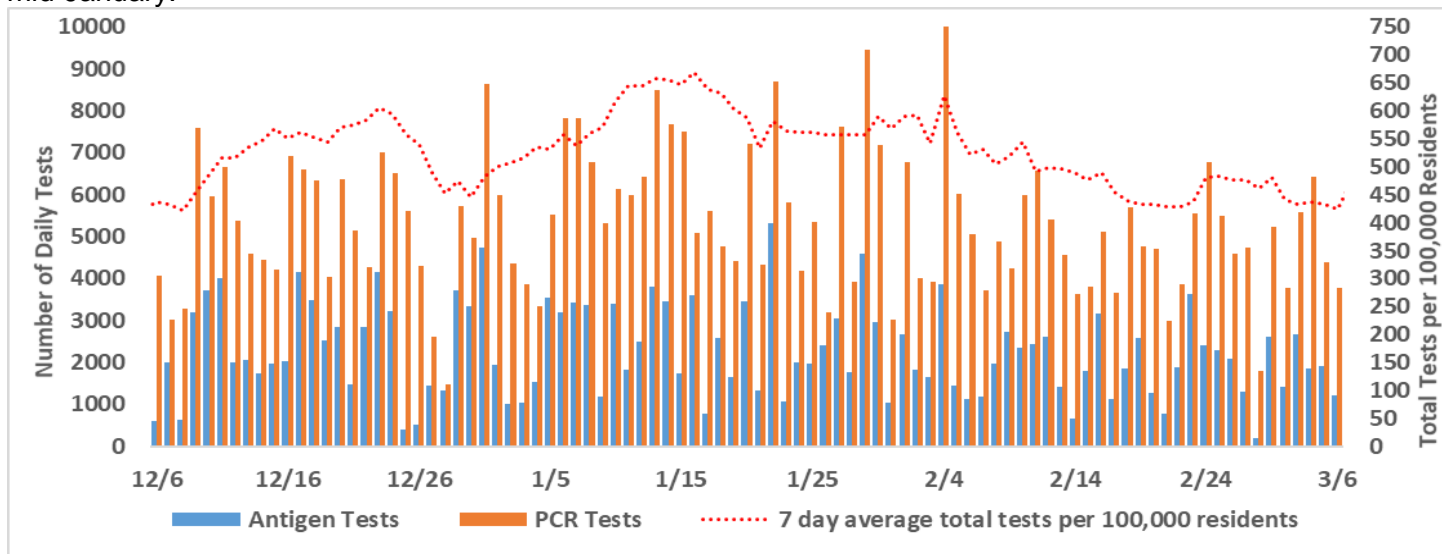


Fig 11B. Reported COVID 7-day average testing rate per 100,000 population for Pinellas, Pasco, and Hillsborough Counties and the State for the past 90 days. These counts are de-duplicated, where each person is only counted once per day, regardless of how many times they were tested. All Tampa Bay area counties slightly decreased this past week.

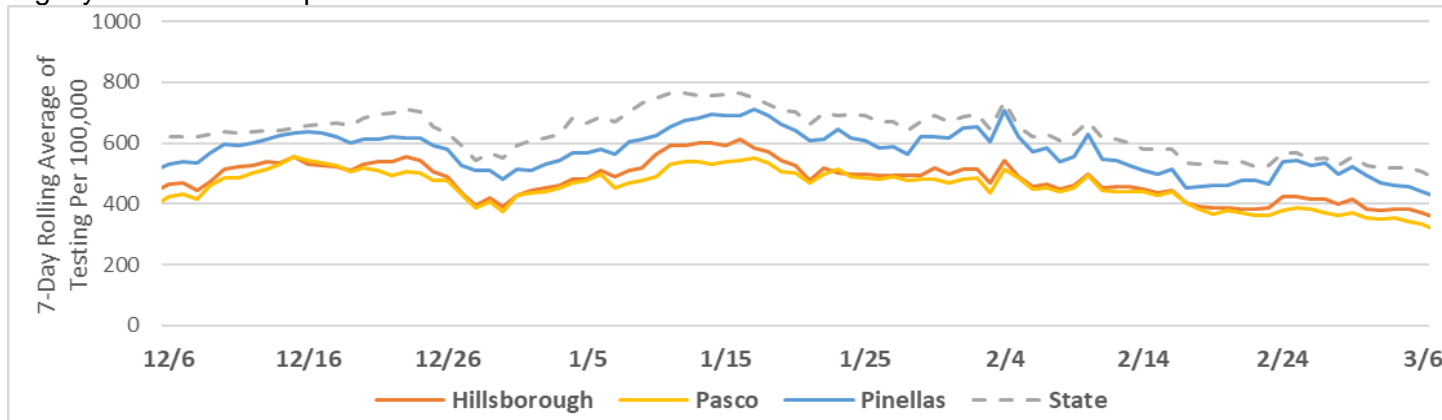


Fig 12. Average COVID testing turn-around-time (TAT) from specimen collection until results reported to DOH for the past 90 days. During November and December, we observed delays in the turnaround time for the reporting of antigen testing results from a few facilities - these results are filtered out of the analysis for that time (dashed line). **Average TAT for antigen tests is generally less than one day. PCR test average TAT remains around 2 days.**

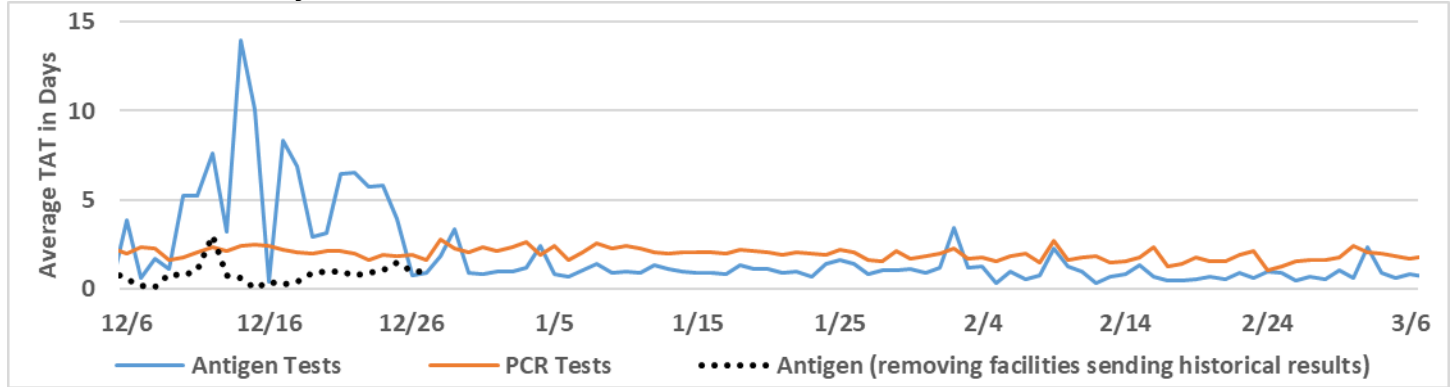


Fig 13. COVID testing percent positivity by age group for the past 90 days on a weekly average, based on Merlin case and lab data for Hillsborough County. Percent positivity was calculated by the date a lab was created that week for a positive COVID case divided by the total number of people tested that week. Decreasing percent positivity is indicating that fewer people tested positive, therefore the lower the percent positivity value the better, which is represented in green. Higher percent positivity values are represented in red. **Percent positivity continued to be highest this past week in the 5-14 age group, and lowest in the 85+ age group.**

	12/5	12/12	12/19	12/26	1/2	1/9	1/16	1/23	1/30	2/6	2/13	2/20	2/27	3/6
0-4 years	6.9%	6.6%	8.1%	9.0%	9.9%	13.4%	8.4%	9.0%	8.1%	4.9%	6.5%	6.6%	6.3%	7.1%
5-14 years	9.2%	9.0%	9.3%	11.8%	17.1%	17.7%	13.6%	13.3%	10.4%	11.7%	8.8%	9.8%	9.3%	9.2%
15-24 years	8.4%	9.5%	10.3%	10.6%	14.9%	14.2%	9.7%	9.9%	9.1%	8.1%	8.4%	8.2%	8.0%	7.7%
25-34 years	8.4%	9.0%	9.4%	8.4%	12.7%	13.7%	11.7%	9.7%	8.9%	6.4%	6.9%	8.7%	7.1%	6.3%
35-44 years	8.5%	8.5%	10.0%	10.5%	14.6%	14.6%	11.7%	10.5%	9.0%	6.9%	7.4%	8.7%	7.5%	7.8%
45-54 years	8.6%	9.2%	11.4%	10.4%	15.1%	15.5%	12.1%	10.6%	9.3%	7.0%	6.7%	7.9%	7.1%	7.0%
55-64 years	7.1%	7.6%	9.0%	9.3%	14.2%	13.3%	10.7%	9.1%	8.2%	6.8%	6.4%	6.9%	6.1%	6.3%
65-74 years	6.0%	7.1%	9.0%	9.6%	13.8%	11.7%	10.1%	9.8%	8.0%	6.5%	6.4%	5.5%	5.8%	5.0%
75-84 years	5.8%	6.4%	8.2%	9.0%	12.7%	11.8%	9.7%	8.1%	7.6%	5.9%	5.8%	4.3%	3.8%	3.5%
85+ years	2.9%	4.8%	5.8%	5.7%	8.6%	8.8%	6.5%	7.9%	6.2%	3.8%	4.4%	3.2%	3.8%	2.0%

Fig 13B. COVID testing rate by age group, per 100,000 population for the past 90 days on a weekly average, based on Merlin lab data for Hillsborough County. Testing rates indicate how many people in that specific age group for Hillsborough County are being tested to identify cases within the community. The higher the testing rate the better, indicated in green. The lower the testing rate is indicated in red. **Testing rate slightly decreased in almost all age groups besides the 85+ age group.**

	12/5	12/12	12/19	12/26	1/2	1/9	1/16	1/23	1/30	2/6	2/13	2/20	2/27	3/6
0-4 years	136	289	277	185	164	173	220	191	218	166	171	141	159	154
5-14 years	175	288	256	209	168	386	256	193	239	224	227	155	184	162
15-24 years	458	553	513	504	445	557	776	462	499	442	456	390	421	370
25-34 years	498	566	548	668	562	623	702	565	592	551	516	443	468	412
35-44 years	440	519	521	510	464	527	586	491	512	465	446	365	405	350
45-54 years	425	487	474	449	440	497	533	469	464	413	410	346	361	326
55-64 years	429	492	476	441	435	498	543	477	479	425	410	366	385	348
65-74 years	371	435	432	361	352	437	474	421	398	347	345	305	318	301
75-84 years	452	484	491	423	410	511	568	490	480	388	421	365	375	357
85+ years	815	833	760	796	644	783	880	784	771	639	652	567	566	730

HOSPITALIZATIONS AND HOSPITALIZATION RATE

Fig 14. COVID admissions and inpatients in Non-ICU and ICU beds in Hillsborough County, based on the AHCA ESS Report. Hillsborough County inpatient hospitalizations for COVID slightly decreased this past week with 7-day average of 221 total COVID inpatients a day. Total inpatient **hospitalizations increased by 5.2% from last week.** Daily COVID admits decreased slightly averaging 35 per day.

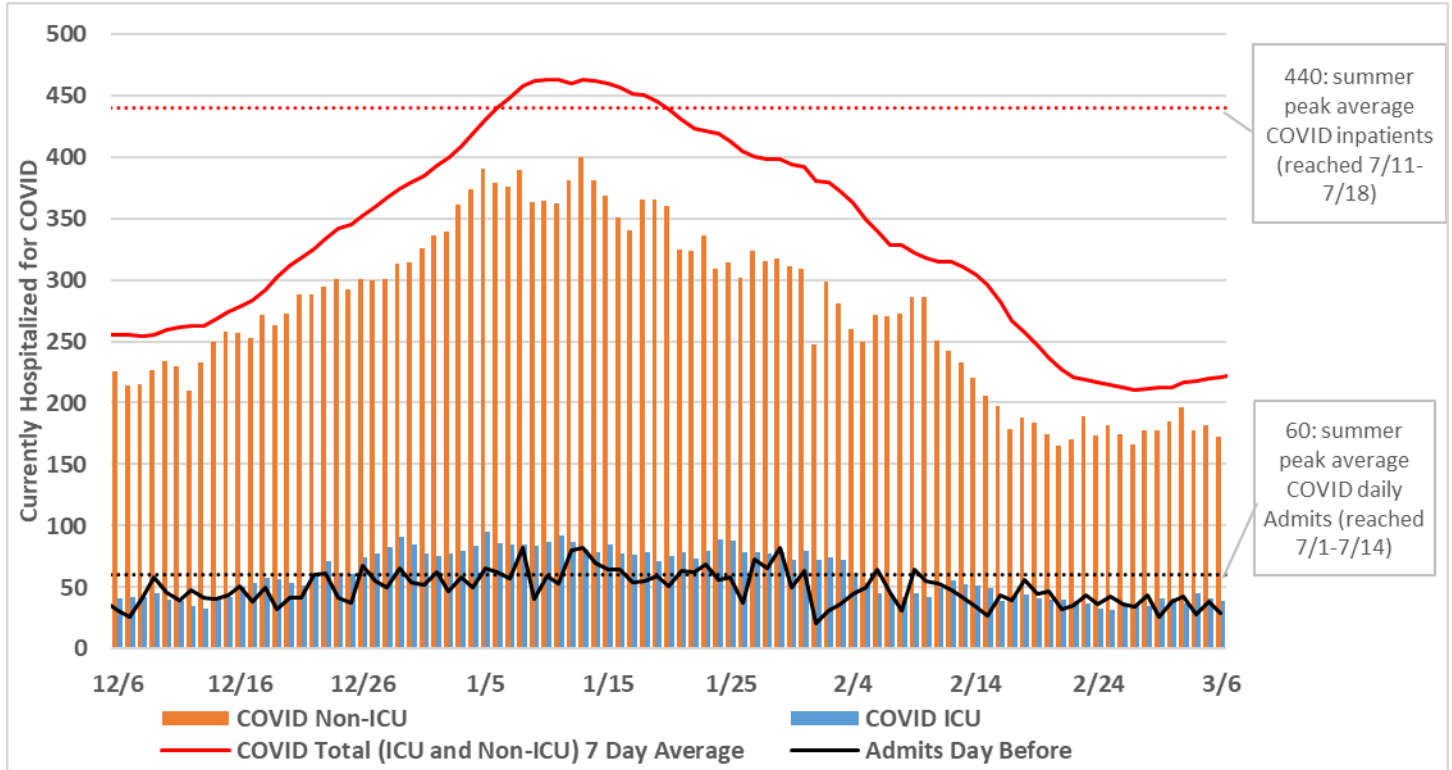


Fig 15. Percentage of Hospital and ICU beds occupied in Hillsborough County, based on AHCA ESS Report. Occupied beds increased to 81% for ICU beds and decreased to 70% in Non-ICU beds.

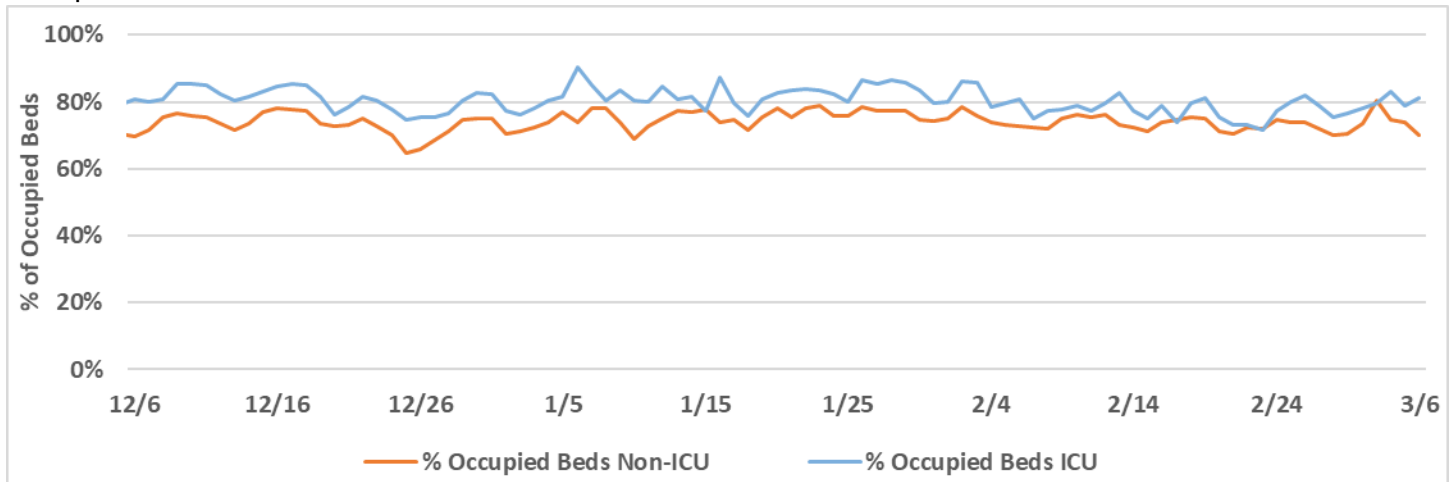


Fig 16. COVID Hospitalization rate per 100,000 by Race/ethnicity, over the past 90 days, based on Merlin case data. Cases with unknown race/ethnicity are excluded. Population data was acquired from FLHealth CHARTS. To collect case hospitalization a case investigation and/or interview is required with the case, therefore the past week has missing/incomplete data as case investigations are ongoing. Over the past week, **hospitalization rates increased in Black Non-Hispanic Cases.**

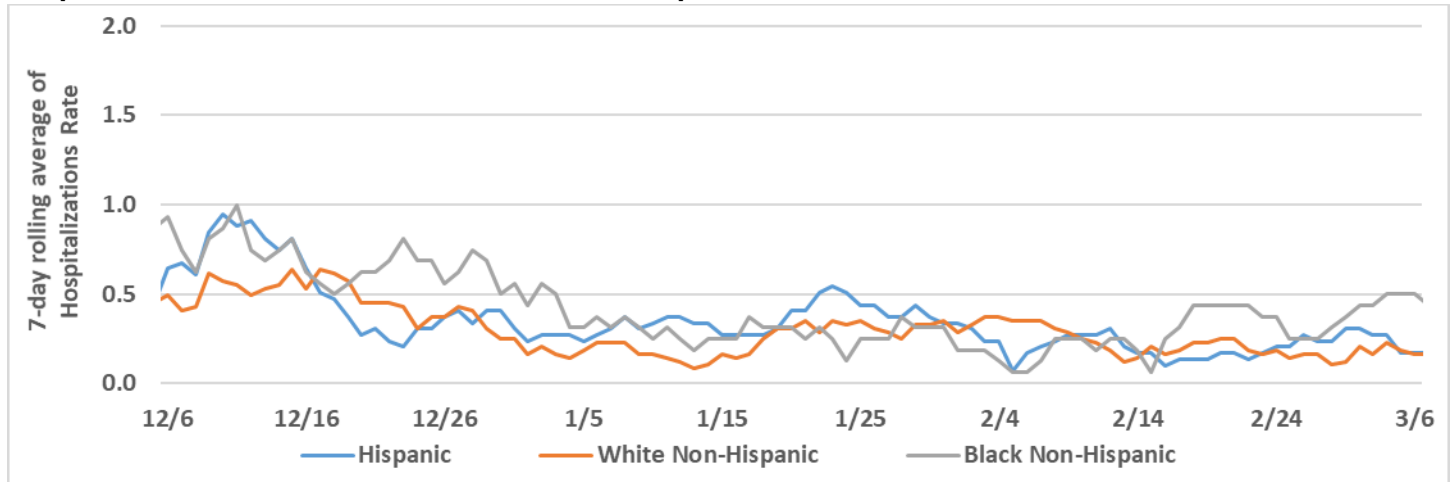
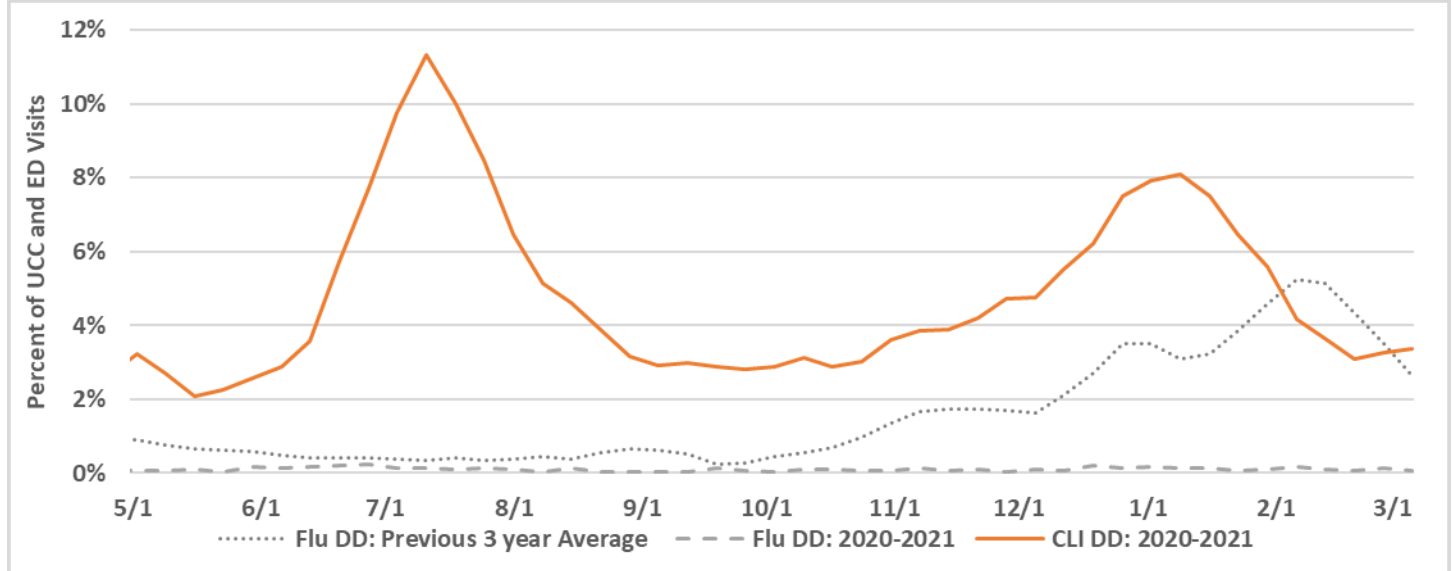


Fig 17. Percentage of Urgent Care Center (UCC), Hospital, and Emergency Department (ED) visits with a discharge diagnosis (DD) for influenza (flu) or COVID-like illness (CLI) in Hillsborough County, based on FL-ESSENCE reporting facilities, by reporting week. As additional DD data is received, the previous weeks could change in value. Visits remain well below the historical values for flu. **The percentage of visits for COVID have decreased each week since 1/9/2021 but increased slightly this past week.**



DEATHS AND DEATH RATES

Important Note: COVID deaths are reported to DOH from a variety of sources including hospitals, Medical Examiners Offices and from the Vital Statistics database. The Vital Statistics Database Data is reported electronically and can have delays of 2-4 weeks from the date of death until the date reported. Data during this time frame should be assumed to be incomplete and is indicated by the shaded area in each graph below.

Fig 18. Daily COVID deaths reported by date of death over the past 90 days, based on Merlin case data and Vital Statistics Death data. Over the past 90 days, reported COVID deaths have ranged from 0-15 per day and **deaths are remaining stable but could further change due to delays in reporting.**

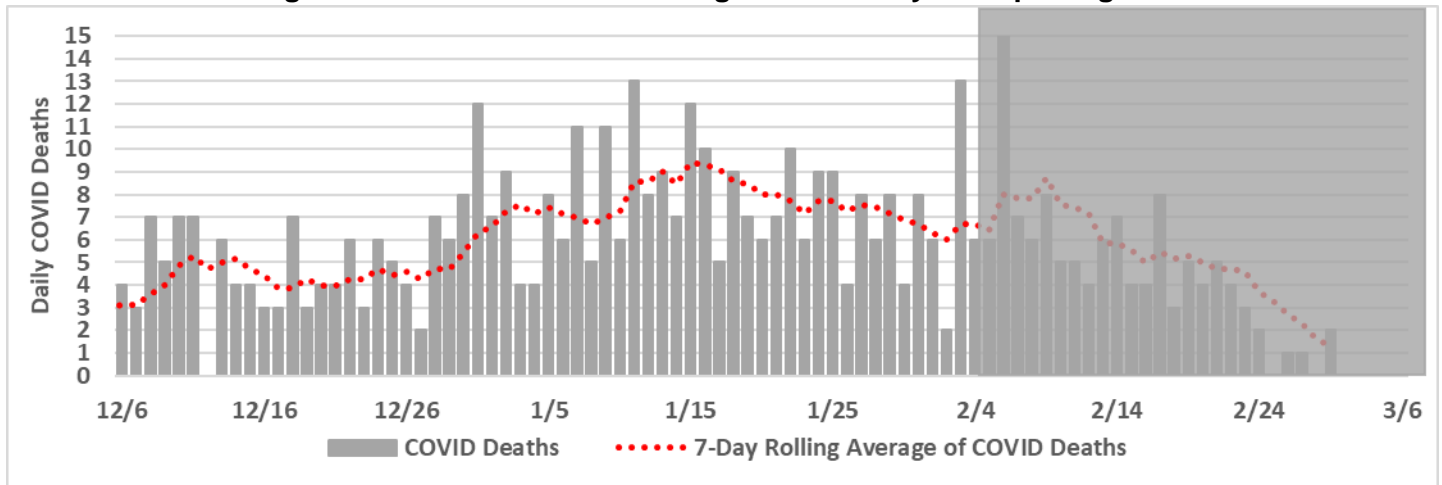


Fig 19. COVID 7-day rolling average death rate per 100,000 by race/ethnicity, for the past 90 days, based on Merlin case data and Vital Statistics Death data. Population data was acquired from FLHealth CHARTS. Cases with unknown race/ethnicity are excluded. Over the past 90 days, **death rates are stable in all race/ethnicities but could change due to delays in reporting.**

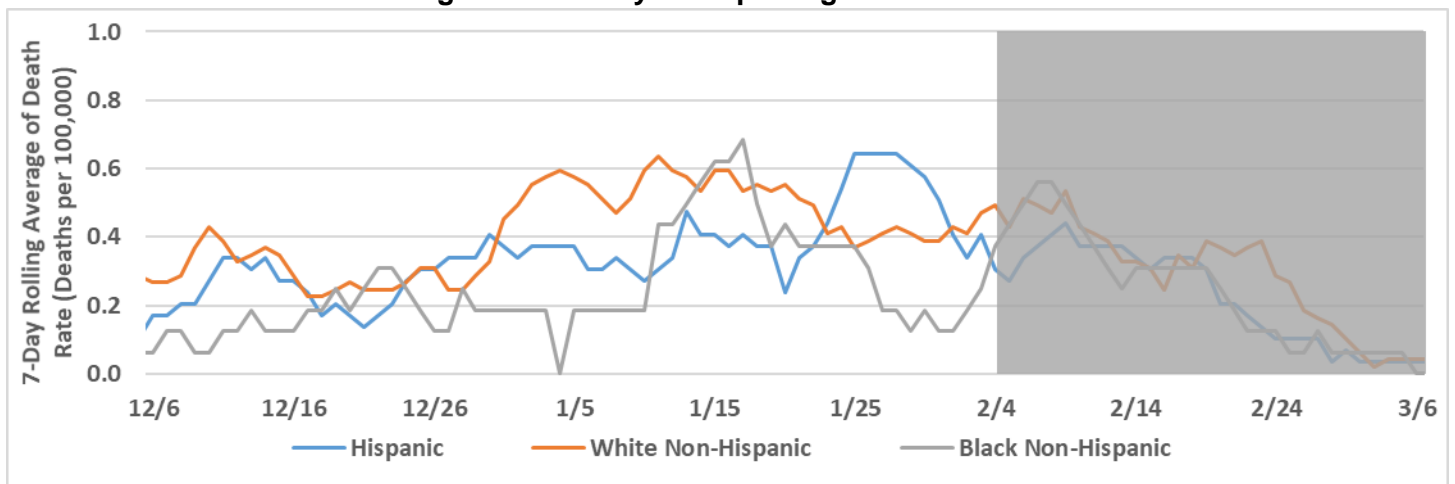


Fig 20. COVID Deaths associated with LTCFs as a percentage of all deaths, over the past 90 days, based on Merlin Data and Vital Statistics Death data. To date, 551 of the 1,535 (36%) COVID deaths in Hillsborough County were associated with LTCFs. Recently, LTCF associated deaths have accounted for about 1-2 deaths/day.

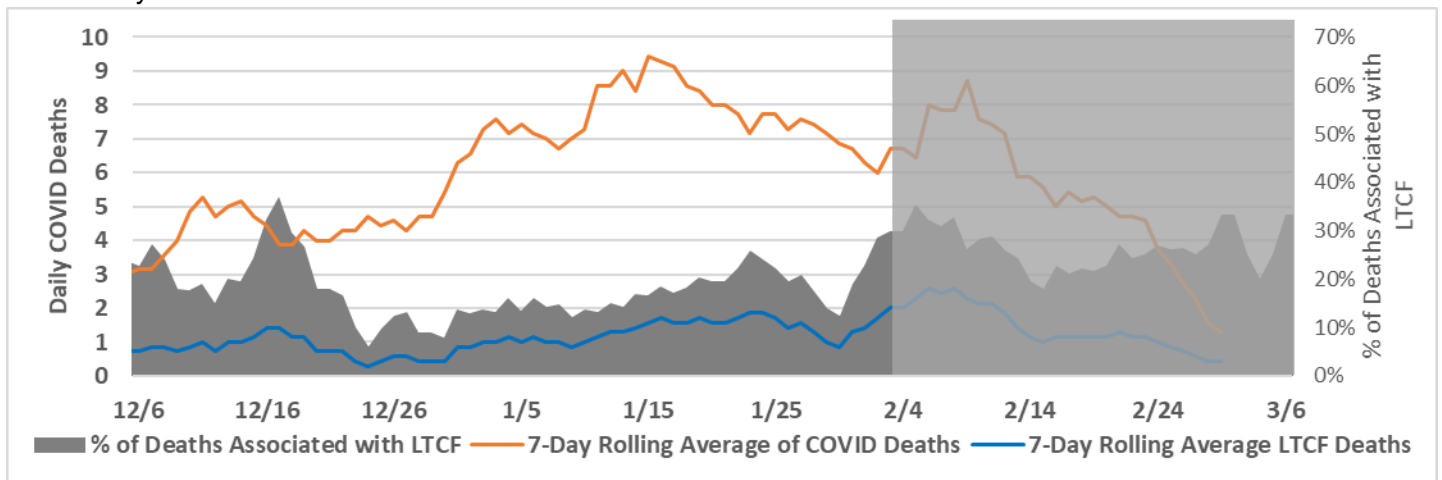


Fig 21. COVID cases, deaths, case fatality rate, and mortality rates by gender, age group and race/ethnicity in Hillsborough County.

Gender	Cases	Deaths	Case Fatality Rate	Mortality rate per 100,000 population
Female	59764	716	1.20%	96.99
Male	51804	819	1.58%	115.84
Unknown	1094	0	0.00%	
Total	112662	1535	1.36%	106.21
Age Group	Cases	Deaths	Case Fatality Rate	Mortality rate per 100,000 population
0-4 years	2457	0	0.00%	0.00
5-14 years	6916	1	0.01%	0.55
15-24 years	19500	2	0.01%	1.09
25-34 years	21616	2	0.01%	0.91
35-44 years	17853	18	0.10%	9.14
45-54 years	16903	57	0.34%	29.67
55-64 years	13240	162	1.22%	93.24
65-74 years	7559	337	4.46%	273.65
75-84 years	4099	493	12.03%	828.85
85+ years	2071	463	22.36%	1939.75
Race	Cases	Deaths	Case Fatality Rate	Mortality rate per 100,000 population
White	52578	1033	1.96%	96.22
Black	13685	229	1.67%	88.80
Other	19787	213	1.08%	187.17
Unknown	26612	60	0.23%	
Total	112662	1535	1.36%	106.21
Ethnicity	Cases	Deaths	Case Fatality Rate	Mortality rate per 100,000 population
Hispanic	32457	350	1.08%	82.83
Non-Hispanic	48038	954	1.99%	93.28
Unknown	32167	231	0.72%	
Total	112662	1535	1.36%	106.21

VACCINATIONS

Fig 22. COVID-19 vaccines administered Statewide and to Hillsborough County residents. Numbers represent the number of doses (green) and people vaccinated (blue) and categories are exclusive (a person has either received “first dose” or “series complete”). Based on data that has been reported to FLSHOTS as of 3/6/2021.

Total COVID-19 Vaccine Doses Administered Statewide	5,483,531	Total COVID-19 Vaccine Doses Administered to Hillsborough County Residents	262,882
Statewide Florida Residents Vaccinated	3,550,139	Hillsborough County Residents Vaccinated	173,231
First Dose Only	1,608,671	First Dose Only	83,581
Series Completed	1,941,468	Series Completed	89,651

Fig 23. COVID vaccine doses administered to Hillsborough County residents by week, using FLSHOTS immunizations records. The “Estimated % of Eligible County Vaccinated” is calculated based on all vaccines administered to Hillsborough County residents (numerator) and eligible population age 16 and older in Hillsborough County (denominator). 23,775 Hillsborough County residents were vaccinated with their first dose of the vaccine during this past week. 89,651 residents have completed the vaccine series.

Week End Date	Weekly Residents Vaccinated with First Dose	Number of Residents Vaccinated With At Least 1 Dose (Cumulative)	% Residents 16 & Over With At Least 1 Dose	Number of Residents Completed Series (Cumulative)	% Residents 16 & Over With Series Completed
12/19/2020	4,419	4,419	0.4%	0	0.0%
12/26/2020	4,911	9,330	0.8%	0	0.0%
1/2/2021	6,528	15,858	1.4%	0	0.0%
1/9/2021	19,973	35,858	3.1%	4,153	0.4%
1/16/2021	23,930	59,761	5.2%	8,297	0.7%
1/23/2021	14,887	74,648	6.5%	11,978	1.0%
1/30/2021	17,021	91,669	7.9%	22,726	2.0%
2/6/2021	18,758	110,427	9.6%	47,179	4.1%
2/13/2021	14,721	125,148	10.8%	59,995	5.2%
2/20/2021	13,462	138,610	12.0%	71,829	6.2%
2/27/2021	10,846	149,456	12.9%	82,191	7.1%
3/6/2021	23,775	173,231	15.0%	89,651	7.8%

Fig 24. COVID-19 vaccine doses administered to Hillsborough County residents by gender and age. The “% of Eligible County Vaccinated” is calculated based on all vaccines administered to Hillsborough County residents (numerator) and eligible population aged 16 and older in Hillsborough County (denominator) for each demographic group. To date, **110,127 (53.3%) Hillsborough County residents over the age of 65 have been vaccinated with at least one dose of COVID-19 vaccine.**

Gender	First Dose	Series Completed	Total Residents Vaccinated	% Residents With At Least 1 Dose	% Residents With Series Completed
Female	49,040	54,274	103,314	17.3%	9.1%
Male	34,249	35,315	69,564	12.5%	6.3%
Unknown	292	61	353	-	-
Total	83,581	89,650	173,231	15.0%	7.8%

Age	First Dose	Series Completed	Total Residents Vaccinated	% Residents With At Least 1 Dose	% Residents With Series Completed
16-24 years	1,532	1,776	3,308	2.0%	1.1%
25-34 years	3,760	7,464	11,224	5.1%	3.4%
35-44 years	5,150	8,375	13,525	6.9%	4.3%
45-54 years	6,706	8,525	15,231	7.9%	4.4%
55-64 years	10,096	9,720	19,816	11.4%	5.6%
65-74 years	33,509	30,057	63,566	51.6%	24.4%
75-84 years	17,334	16,753	34,087	57.3%	28.2%
85+ years	5,494	6,980	12,474	52.3%	29.2%
Total	83,581	89,650	173,231	15.0%	7.8%

Age	First Dose	Series Completed	Total Residents Vaccinated	% Residents With At Least 1 Dose	% Residents With Series Completed
16-64 years	27,244	35,860	63,104	6.7%	3.8%
65+ years	56,337	53,790	110,127	53.3%	26.0%
Total	83,581	89,650	173,231	15.0%	7.8%

Fig 25. Percentage of residents 65 years old and over receiving at least one dose of the COVID-19 vaccine, comparison of Hillsborough, Pasco and Pinellas Counties. COVID-19 vaccine was made available by Executive Order to residents 65 years old and over at the end of December 2020. **The percentage of 65 years old and over vaccinated has steadily increased in all three counties since then.**

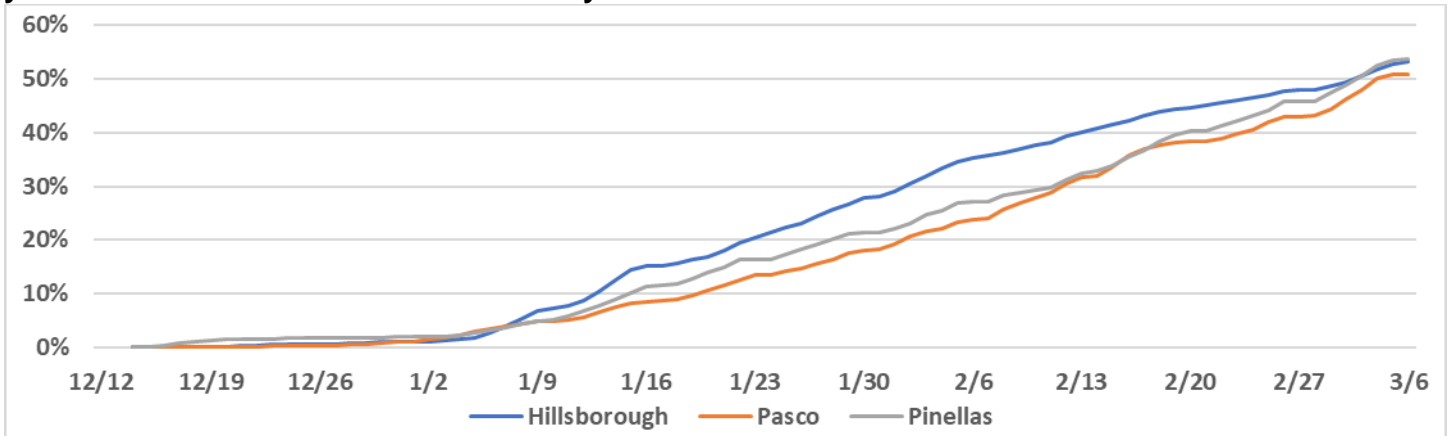
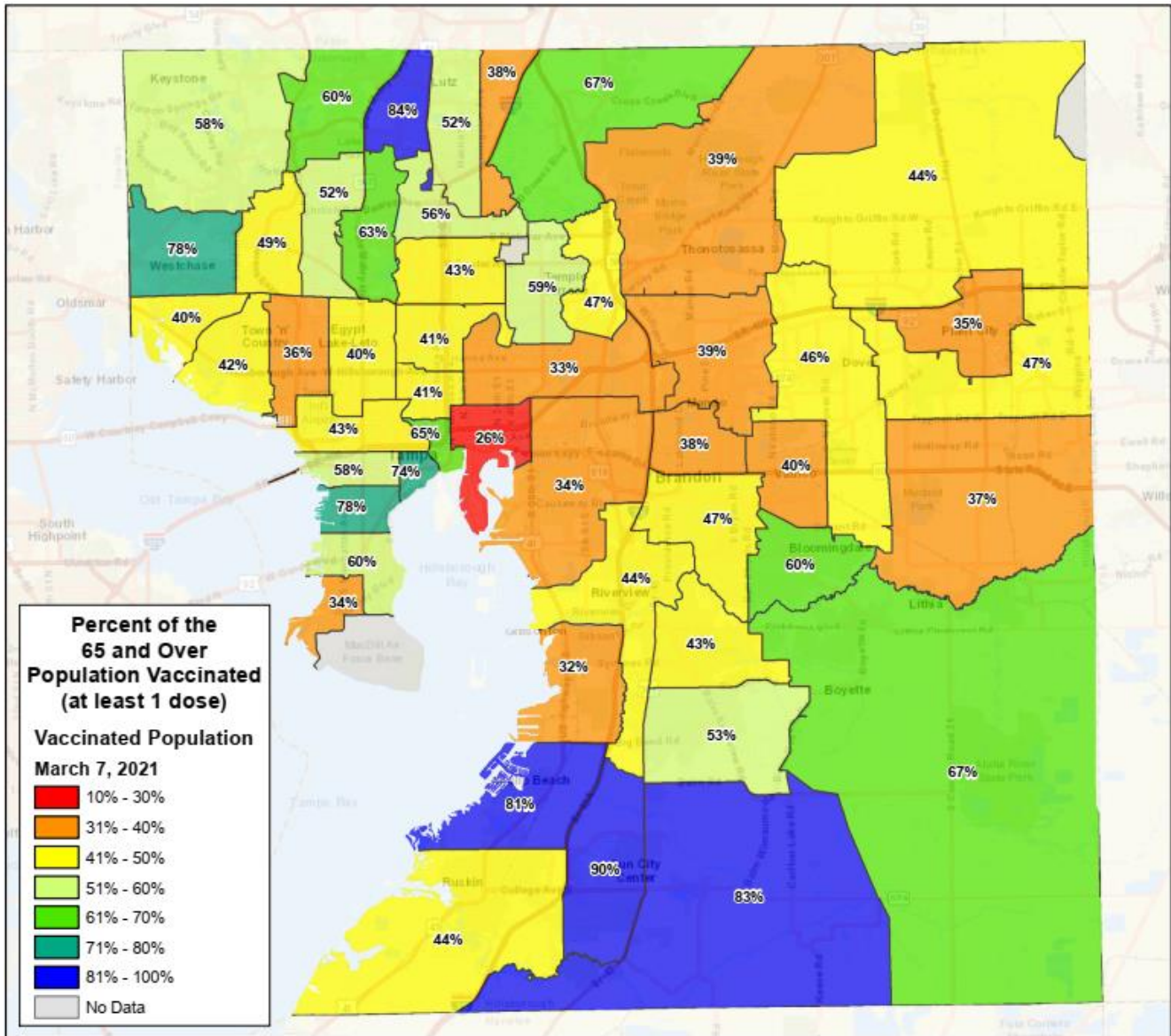


Fig 26. Percentage of residents 65 years and over in Hillsborough County who have received at least one dose of COVID-19 vaccine, by resident's zip code. **The percentage of the 65 and over population receiving at least one dose of COVID-19 vaccine by zip code ranges from 26% up to 90%**



Additional COVID surveillance data, visualizations and information can be found at the links below:

- Florida Department of Health Statewide COVID Dashboard: <https://experience.arcgis.com/experience/96dd742462124fa0b38ddedb9b25e429/>
 - Hillsborough County COVID Dashboard: <https://www.hillsboroughcounty.org/en/residents/public-safety/emergency-management/stay-safe/covid-19-dashboard>
 - Hillsborough County School District Dashboard: <https://hillsboroughschools.org/doc/2744/school-reopening-plan/frequently-asked-questions/coviddash/>
-

Additional notes about data sources and data collection for the charts and tables used in this report:

Merlin reportable disease database: Merlin serves as the state's repository of reportable disease case reports, including automated notification of staff about individual cases of high-priority diseases. Access to Merlin is available only to approved Department of Health employees. COVID data is entered in Merlin in multiple ways. Data fields associated with Electronic Lab Reports (ELRs) or electronic case reports will be auto populated when available. Additionally, specific to COVID cases, the Healthy Together APP allows for individuals to complete and report demographics, symptomology and other data elements to DOH. Case investigators and contact tracers also make attempts to interview each COVID case to collect or verify demographics and other important public health data. As the data is collected from case investigations the Merlin database will be updated. Some data elements, such as deaths and group care associations (Jails, LTCFs, and Schools) are reviewed by local and state staff for accuracy. Data within Merlin is considered provisional and is subject to change.

AHCA ESS Report: Florida's Agency for Health Care Administration (AHCA) requires all licensees providing residential or inpatient services to use the Emergency Status System (ESS) database for reporting its emergency status, planning or operations. In response to COVID the Agency added new reporting requirements related to COVID cases and hospitalizations at AHCA licensed facilities.

ESSENCE-FL: The Electronic Surveillance System for the Early Notification of Community-based Epidemics (ESSENCE) is a biosurveillance system that collects emergency department chief complaint data from participating hospitals and urgent care centers in Florida, call data from the Florida Poison Information Center Network, reportable disease data from the Merlin database, and mortality data from the Florida Office of Vital Statistics. The objective of this surveillance system is to provide the epidemiologist with the data sources and analytic tools needed to identify outbreaks or unusual trends more rapidly, leading to a timelier public health response.

FLSHOTS: Florida SHOTS is a free, statewide, centralized online immunization information system that helps healthcare providers and schools keep track of immunization records to ensure that patients of all ages receive the vaccinations needed to protect them from dangerous vaccine-preventable diseases. FLSHOTS is a program of the Florida Health Immunization Section and is supported by the Centers for Disease Control and Prevention.

Vital Statistics: The Florida Department of Health, Bureau of Vital Statistics manages the official database and records for deaths in the State of Florida. When a death occurs, the cause of death and medical certification is completed by a medical certifier, which includes physicians, medical examiners and autonomous advanced practice registered nurses. As these medical certifications occur, data and records are managed and stored within the Vital Statistics database.

FLHealth CHARTS: Powered by Florida's Bureaus of Community Health Assessment and Vital Statistics. CHARTS stands for Community Health Assessment Resource Tool Set, and compiles multiple datasets from a variety of agencies into a single source. Several data sources include Agency for Health Care Administration (AHCA), Florida Department of Health, Florida Department of Elder Affairs, Florida Department of Law Enforcement, and many others. A complete list of data sources can be found at <http://www.flhealthcharts.com/Charts/documents/training/DataSources.pdf> Data queries such as population estimates, birth rates, death rates, marriage rates, and reportable disease statistics can be found using this tool.